

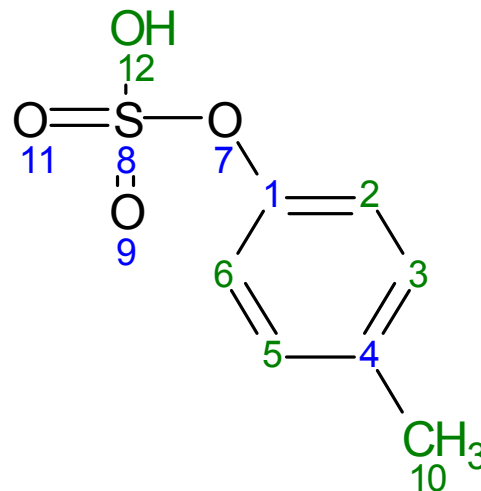
p-Cresol sulfate

HMDB11625

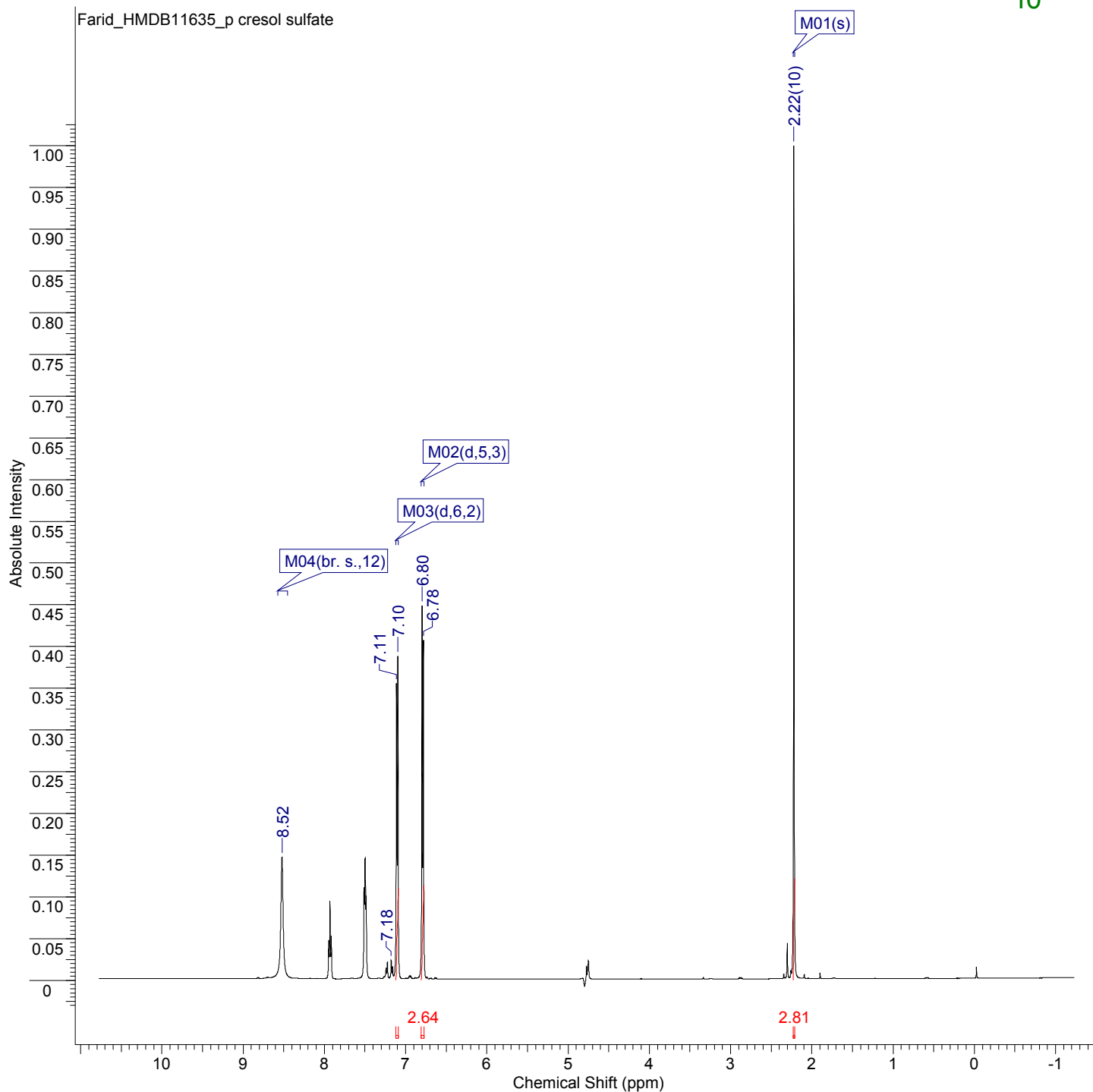
$^1\text{H}$  NMR Spectrum: 500MHz

Sample: ~50mM in H<sub>2</sub>O and pH 7.00

Referenced to DSS



Full  $^1\text{H}$  NMR spectrum



p-Cresol sulfate

HMDB11625

<sup>1</sup>H NMR Spectrum: 500MHz

Sample: ~50mM in H<sub>2</sub>O and pH 7.00

Referenced to DSS

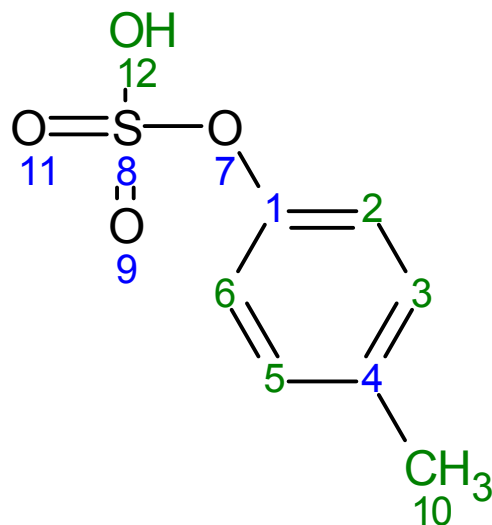


Table of Peaks

No.	(ppm)	Height
1	2.22	1.0000
2	6.78	0.4077
3	6.80	0.4490
4	7.10	0.3886
5	7.11	0.3557
6	7.18	0.0242
7	8.52	0.1475

Table of Assignments

No.	Shift1 (ppm)	H's	Type	J (Hz)	Atom1	Multiplet1	(ppm)
1	8.52	1	br. s.	-	12	M04	[8.45 .. 8.57]
2	6.79	3	d	8.24	5, 3	M02	[6.77 .. 6.81]
3	7.10	3	d	8.05	6, 2	M03	[7.09 .. 7.12]
4	2.22	3	s	-		M01	[2.21 .. 2.23]

Table of Multiplets

No.	Atom	Exp. Shift (ppm)	Multiplet
1	10	2.22	-
2	5	6.79	M02
3	3	6.79	M02
4	6	7.10	M03
5	2	7.10	M03
6	12	8.52	M04

# p-Cresol sulfate

HMDB11625

<sup>1</sup>H NMR Spectrum: 500MHz

Sample: ~50mM in H<sub>2</sub>O and pH 7.00

Referenced to DSS

